



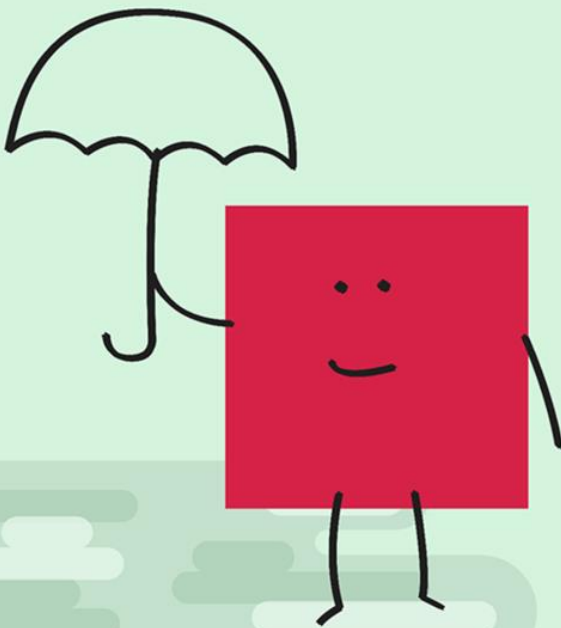
happy. safe. ready.

We are looking for an...

# Associate Counselling Psychologist



we believe children  
and young adults  
should be **happy**,



they should be  
**safe**...

and we think they  
should be **ready**.



# Job description

**HSR Psychology is part of the Tx Group: a growing private therapy company, providing a variety of health and education therapy services in the North West of England.**

HSR Psychology is a not-for-profit social enterprise, committed to making a positive change in society. HSR Psychology offers psychology services to individuals, schools and colleges, working with children and young people to maximise wellbeing and potential by providing immediate access to a broad range of psychology services. HSR believes all children and young people should have their needs met at home, school and in the community so they can be happy, safe and ready to cope with life's challenges.

HSR Psychology provides input to early years, schools and in post sixteen education settings in the North West of England, as well as from our clinic based in central Manchester. Our employees make a real difference by contributing to the development of an environment to ensure children's attainment, wellbeing, and progress is maximised.

We have exciting opportunities for Associate Counselling Psychologists to join our team. We anticipate the roles will be predominantly school based and will involve providing assessments, consultations and interventions, as well as delivering training to individuals and groups to increase awareness and offer guidance. The roles will entail working collaboratively with our team of clinical psychologists, educational psychologists, counselling psychologists and assistant psychologists and will involve providing supervision input and participating in peer supervision with the psychology team.

## **What does it take to be successful in this role?**

To be successful in this role you would need to:

- Provide a consistently high standard of interventions for the children and schools you work with and achieve tangible results.
- Build a strong rapport with the children, young people, families and professionals you work alongside.
- Be committed to making a difference to the lives of children and young people.
- Work well both independently and as part of a multidisciplinary team.
- Practice with a holistic, child centred approach.
- Have impeccable communication skills in order to provide clear support and training to relevant parties.
- Be flexible in your approach and adapt to a variety of circumstances and requests, according to needs.
- Act as a champion for HSR Psychology.

# Job description

## The Ideal Candidate

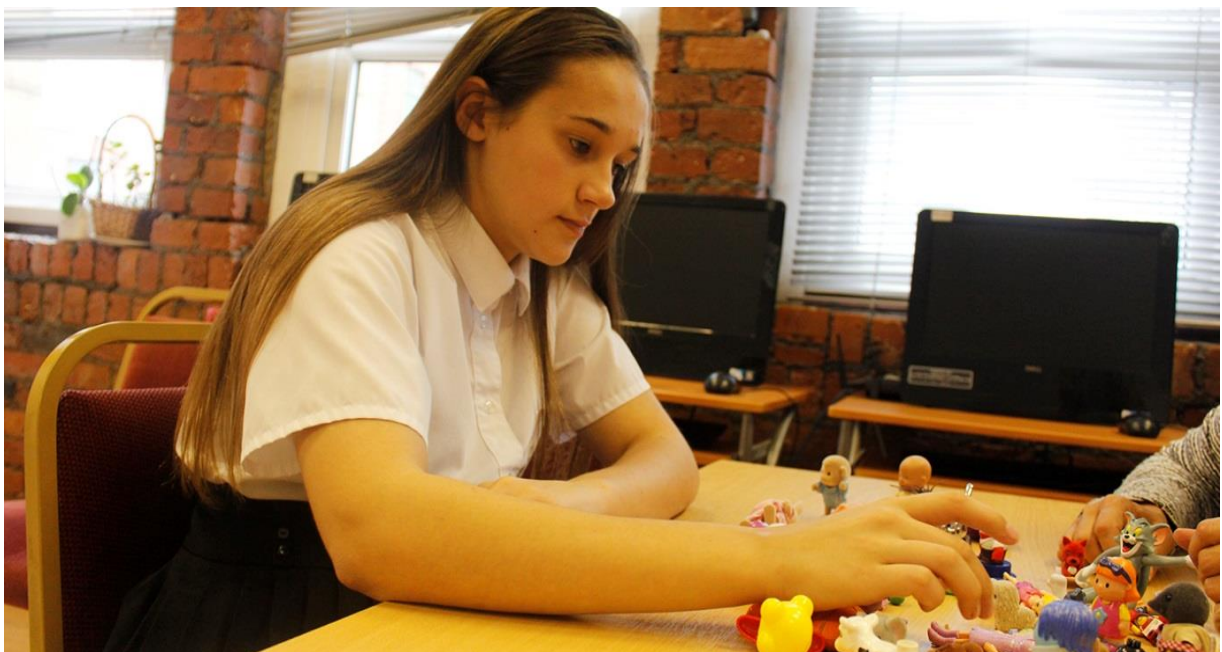
The successful applicant must meet the following requirements:

- BPS accredited Doctorate in Counselling Psychology / BPS Qualification in Counselling Psychology.
- Eligible for membership to BPS Division of Counselling Psychology
- HCPC Registered Practitioner Psychologist
- Experience working directly with children, young people and families
- Paediatric placement during training / paediatric experience post-qualification

Our ideal candidate will be a personable individual with a calm, caring and patient demeanor. They will be capable of quickly establishing a rapport with children and young people and will have a positive, motivating and encouraging attitude. They will have impeccable communication skills and will be at ease delivering interventions, training and advice to groups and individuals.

The successful candidate will have an in depth knowledge of mental health and developmental issues, statutory guidelines and an up-to-date knowledge of the field and an innovative and flexible approach. They will be conscientious, focused and confident working both independently and within a team. They will be highly organised, prioritise their workload appropriately and be comfortable working to deadlines.

Due to the travel requirements of the role, this position would be most appropriate for an individual with a driving licence and access to a car.



**We provide each child and young person with the skills they need to maximise their potential.**



# Job summary

<b>TITLE:</b>	<b>Associate Counselling Psychologist</b>
<b>SALARY</b>	<b>Competitive</b>
<b>LOCATION</b>	<b>North West of England</b>
<b>HOURS</b>	<b>Part Time</b>
<b>ACCOUNTABLE TO</b>	<b>Senior Management</b>

HSR Psychology is part of the Tx Group: a growing private therapy company, providing a variety of health and education therapy services in the North West of England.

HSR Psychology is a not-for-profit social enterprise, committed to making a positive change in society. HSR Psychology offers psychology services to individuals, schools and colleges, working with children and young people to maximise wellbeing and potential by providing immediate access to a broad range of psychology services. HSR believes all children and young people should have their needs met at home, school and in the community so they can be happy, safe and ready to cope with life's challenges.

HSR Psychology provides input to early years, schools and in post sixteen education settings in the North West of England, as well as from our clinic based in central Manchester. Our employees make a real difference by contributing to the development of an environment to ensure children and young people's attainment, wellbeing, and progress is maximised.

The Associate Counselling Psychologist will join our HSR Psychology team, working with schools and individuals in the North West of England.



# Job summary

## Job summary

### *Main Responsibilities:*

- Working with patients with complex needs.
- Increasing awareness of the positive role counselling psychology can have on children and young people.
- Provide information on the counselling psychology service and the role of the counselling psychologist to students and staff.
- Establish a relationship of trust and respect with the children, young people and adults you work with.
- Promote and maintain good working relationships with colleagues, clients, families, carers and other external agencies.
- Identify pupils in need of support – complete assessments, risk assessments and carry out early intervention measures / preventative intervention.
- To assess, plan and implement programmes of care for individual children and young people, carers and families with complex behavioural, emotional, psychological or mental health issues.
- Provide individual and group counselling.
- Provide support, guidance and advice to parents, carers and the school.
- Train staff, parents and carers.
- To undertake risk assessment and risk management for all children and young people, including the protective and risk factors in the network of significant relationships.
- Communicate in a skilled and sensitive manner to parents, carers, professionals involved and when appropriate to the children and young people themselves concerning treatment plans and progress evaluation.
- Maintain accurate counselling session records and write reports as and when required.
- Attend internal and external meetings as required.
- Organise and administer the counselling psychology service in conjunction with schools' staff.
- Collaborate / liaise with multidisciplinary team and school staff, in the best interest of the child / young person, whilst within the limits of client confidentiality.
- Work together and help education providers develop environments to ensure their students' attainment, wellbeing, and progress is maximised.
- Provide support and training to individuals and groups.
- Help give children, young people and their families the knowledge they need to lead happy, healthy and fulfilled lives.
- Work together and help education settings develop psychologically informed. environments to ensure their students' attainment, wellbeing, and progress is maximised.
- To provide a flexible service that adapts to the needs of the child, young person, or education setting.

## Job summary

- Provide high-quality counselling services in educational settings involving:
  - Discussion and exploration of difficulties in a confidential and non-judgemental atmosphere.
  - Encouraging children / young people to talk about issues they feel they cannot normally share with others.
  - Actively listening to child's / young person's concerns and empathising with their position.
  - Accepting without bias the issues raised.
  - Help children and young people develop a better understanding of themselves and their difficulties and increase their self-awareness.
  - Help children / young people to see things more clearly or differently.
  - Help children and young people develop personal resources needed to manage and address problems and pursue meaningful goals.
  - Help children / young people to make decisions and choices regarding possible ways forward.
  - Help develop strategies to cope with change.
  - Empathise but challenge when necessary.
  - Build resilience.
- To provide support and coping strategies including, but not limited to:
  - Emotional management techniques
  - CBT based interventions
  - Mindfulness
  - Skills based groups
- To maintain up to date knowledge of legislation, national and local policies and issues in relation to both the specific client group and mental health.
- Keep up to date with child protection issues, current policy and procedure.
- Effectively use outcome measures and adapt or develop interventions accordingly.
- Provide appropriate statistical returns as required, evaluate outcomes of therapeutic work and gather feedback on the service.
- Undertake project and practice evaluation as directed.
- Participate in research as required.
- Provide a flexible service that adapts to the needs of the child, young person, or educational setting.
- Refer clients to other sources of help, as appropriate.
- Refer child protection concerns to the senior designated person within the school.
- Maintain and develop professional practice through participating in regular supervision with your external supervisor and with our multidisciplinary team.
- Provide supervision where appropriate.
- Promote a culture of inclusion at all times.



# Job summary

## Responsibilities

### *General Responsibilities:*

- To manage all tasks effectively and efficiently.
- Set high standards of self and others, assume responsibility and accountability for completion of tasks on behalf of the team.
- Monitor and update diary and bookings system where necessary.
- Update clinical notes following each appointment.
- Assist with the coordination of everyday services.
- Demonstrate effective time management and organisational skills.
- Effectively manage own workload.
- Adapt to a changing work pattern

### *Team Member Responsibilities:*

- Run an efficient and high quality service.
- Collaborate to deliver an excellent experience for all stakeholders.
- Participate as part of a happy and motivated dynamic team.

### *Professional Development Responsibilities:*

- Participate in continuous professional development.
- Recognise own development needs and identify how these can be met.
- Participate in the teaching and training of team members.

***This job description is not meant to be exhaustive and reflects only the current and anticipated responsibilities of the post. The successful applicant will be expected to work flexibly in order to meet the overall needs of the position.***

## How to apply

To apply, please send your CV and any covering information to [careers@hsrpsychology.co.uk](mailto:careers@hsrpsychology.co.uk)



**We provide immediate access to broad range of child psychology services to early years, schools, post-16 education providers, parents and carers.**



happy. safe. ready.

**Apply today!**

**To apply please send your CV  
and any covering information to:  
[careers@hsrpsychology.co.uk](mailto:careers@hsrpsychology.co.uk)**

